

TESSYS[™]

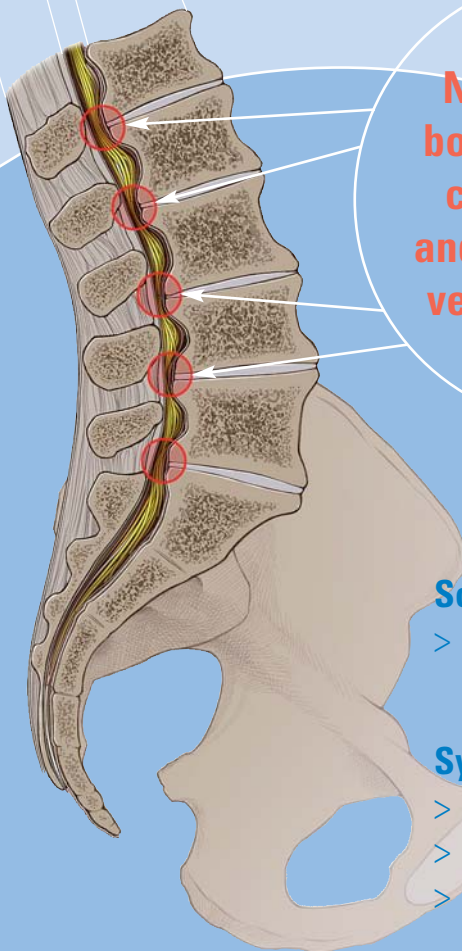
Spinal Stenosis Program;

Dr. R. Morgenstern

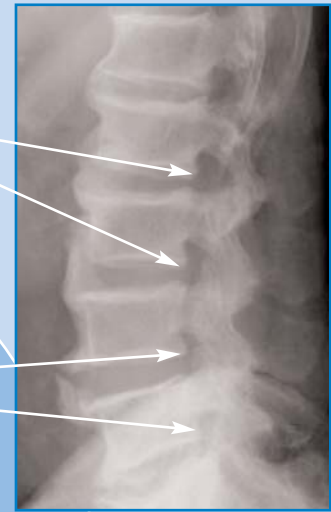
Unmet Minimally Invasive Treatment Needs

360°

Spinal Stenosis is a disease of the aging population with a growing incidence rate especially in the industrialized world



Need to remove bony osteophytes, calcified tissue and to stabilize the vertebral column.



Schematic and diagnosis of the disease

- > Growing osteophytes and calcifying tissue compress the spinal cord, vessels and nerves

Symptoms of spinal stenosis (clinically)

- > Dull or aching back pain spreading to the legs
- > Numbness, "pins and needles" in the legs, calves or buttocks
- > Weakness, or loss of balance, decreased endurance for physical activities
- > Symptoms increase after walking a certain distance or standing for a certain period in time

TESSYS™ Spinal Stenosis Program: Dr. R. Morgenstern

Current Spinal Stenosis Treatment Options

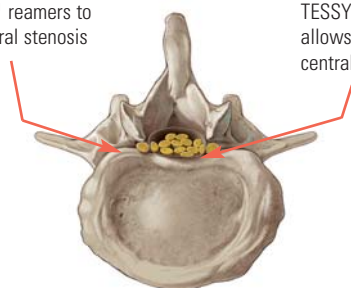
Traditionally: Maximal invasive procedure, destabilizing the whole spinal column, resulting in multi-level fusions.

Currently: Inadequate (too hard or too soft) interspinous spacers for restoration of height of the dorsal vertebral column only.

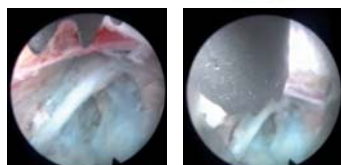
The new way of adequate treatment with ...

... TESSYS™ Spinal Stenosis Program

TESSYS™ reamers to open lateral stenosis

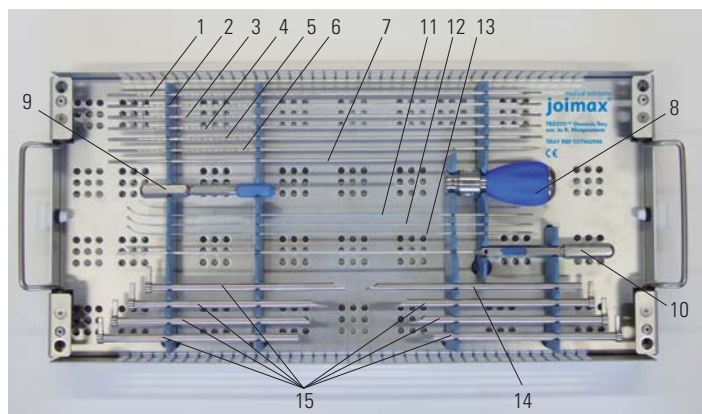


TESSYS™ EndoReamer allows removal of central stenosis



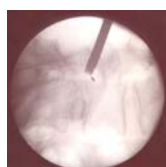
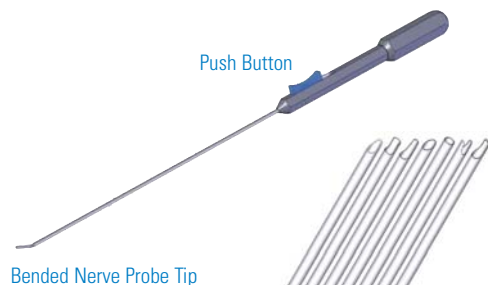
EndoReamer in the spinal canal (by courtesy of Dr. R. Morgenstern)

... TESSYS™ Spinal Stenosis Tray



1. **EndoSpatula** (Length: 370 mm, OD: 2.6 mm)
2. **EndoElevator** (Length: 370 mm, OD: 2.6 mm)
3. **EndoElevator** (Length: 370 mm, OD: 3.0 mm)
4. **EndoChisel** (Length: 370 mm, OD: 2.6 mm)
5. **EndoChisel** (Length: 370 mm, OD: 3.0 mm)
6. **EndoAwl Long** (Length: 370 mm, OD: 2.6 mm)
7. **EndoAwl Short** (Length: 250 mm, OD: 3.0 mm)
8. **Handle EndoReamer** (PalmHandle)
9. **Handle EndoInstruments**
10. **Handle Probes** (Length: 450 mm, OD: 2.5 mm)
11. **EndoProbe Standard** (Length: 320 mm, OD: 2.0 mm)
12. **EndoProbe Abrasor** (Length: 320 mm, OD: 2.0 mm)
13. **EndoProbe Cutter** (Length: 320 mm, OD: 2.0 mm)
14. **ChiselTube** (Length: 185 mm, ID: 5.3 mm, OD: 6.3 mm)
15. **Working Sleeves** (Length: 171 mm or 210 mm, ID: 6.5 mm, OD: 7.5 mm)

... new deflectable Instruments, new Working Sleeves

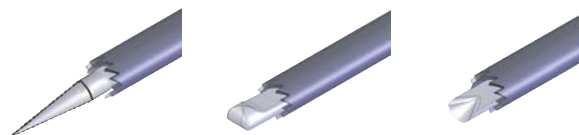


FlexProbe in the spinal canal (by courtesy of Prof. Dr. J. Stöve)



... in different lengths and seven different windows

... new EndoInstruments



EndoReamer guided over: EndoAwl, EndoElevator, EndoChisel

joined minimal access technologies

joimax, Inc.

275 E. Hacienda Avenue
Campbell, CA 95008 USA
PHONE +1 408 370 3005
FAX +1 408 370 3015
MAIL usa@joimax.com
NET www.joimax.com

joimax GmbH

RaumFabrik 33a, Amalienbadstraße
76227 Karlsruhe - Germany
PHONE +49 (0) 721 255 14-0
FAX +49 (0) 721 255 14-920
MAIL info@joimax.com
NET www.joimax.com

Copyright © 2007 joimax GmbH. All rights reserved.
No part of this document may be reproduced, stored in a retrieval system, or transmitted, in any form, or by any means, electronic, mechanical, photocopying, recording, or otherwise, without the expressed written permission of the joimax GmbH. joimax, Vitegra, Camsource, TESSYS, Spot, Flexeps are brands or trademarks of joimax. Other products and company names mentioned here in may be the trademarks of their respective owners. Patents pending. Information and products contained in this document are subject to change without notice.

CAUTION: U.S. FEDERAL LAW RESTRICTS THIS DEVICE TO SALE BY OR ON THE ORDER OF A PHYSICIAN